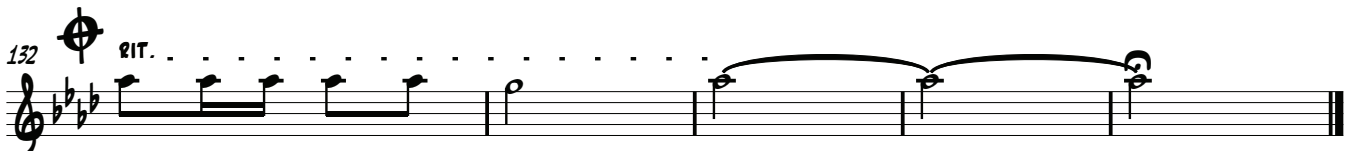
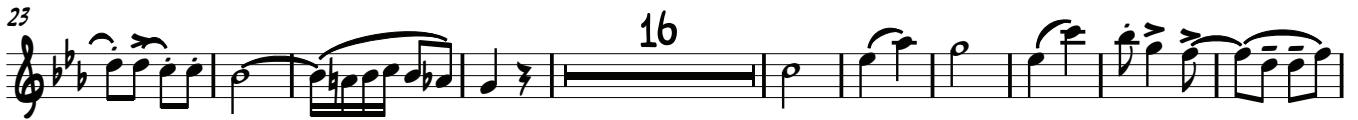


# EIN SCHÖNES GESCHENK

1. FLÜGELHORN IN B

MEISER DAVY

♩ = 125



# EIN SCHÖNES GESCHENK

TENORHORN IN B

MEISER DAVY

$\text{♩} = 125$

Musical staff 1 (measures 1-15). Includes a first ending bracket labeled '5'.

Musical staff 2 (measures 16-33). Includes a first ending bracket labeled '7'.

Musical staff 3 (measures 34-43).

Musical staff 4 (measures 44-52). Includes first and second ending brackets labeled '1.' and '2.'. Ends with 'FINE'.

Musical staff 5 (measures 53-60). Dynamic markings: *f*, *p*, *f*.

Musical staff 6 (measures 61-68). Dynamic markings: *f*, *p*, *f*. Ends with 'D.C. AL FINE'.

Musical staff 7 (measures 69-80). Section marked 'TRIO'.

Musical staff 8 (measures 81-98). Includes first and second ending brackets labeled '7' and '3'.

Musical staff 9 (measures 99-105). Includes first and second ending brackets labeled '1.' and '2.'.

Musical staff 10 (measures 106-113).

Musical staff 11 (measures 114-121).

Musical staff 12 (measures 122-131). Section marked 'SOLO'. Ends with 'D.S. AL CODA'.

Musical staff 13 (measures 132-140). Section marked 'RIT.'.